

# MISS AI

---

AI Image Prompt Collection

12 Creative Prompts to Transform Your Photos

PROMPTS

# 01

## 3D Designer Toy

COPY & PASTE PROMPT



Create a premium glossy 3D "designer toy" render of the subject(s) using the uploaded image as the only reference. Render one floating head per person (no duplication), cropped cleanly below the jaw with a visible neck and full head comfortably framed. Style: high-quality vinyl figure with ultra-smooth, simplified forms, rounded volumes, and strong glossy reflections across key facial areas. Hair should be sculpted, glossy, and stylized, with embedded playful accessories. Include oversized retro wraparound sunglasses with vibrant, matching frame/lens colors. Use strong studio lighting with pronounced highlights. Background: blue sky with soft clouds.

# 02

## Elevated Fashion Portrait

---

COPY & PASTE PROMPT



Transform this photo into an elevated fashion studio portrait. Choose a complementing-color background that enhances the subject's skin tone. Keep a tight head-and-shoulder composition with the subject centered and facing the camera straight with an optimistic expression. Apply directional lighting with subtle shadows. Preserve natural skin tones while making the image polished, minimal, and editorial—like a magazine photoshoot.

# 03

## Nighttime Flash Photography

---

COPY & PASTE PROMPT

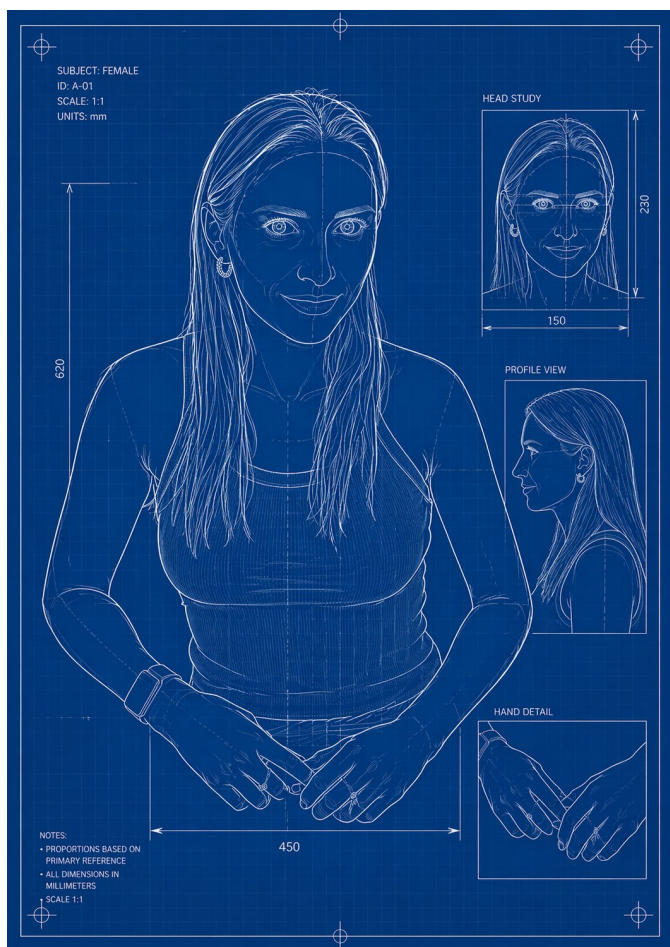


Transform the photo into nighttime chic flash photography. Use harsh direct on-camera flash with strong highlights, deep shadows, and slight overexposure on the subject. Set the scene at night with a dark, moody background while keeping realistic colors and textures. Add a candid, editorial feel, slightly imperfect framing, motion energy, and spontaneous expression. Emphasize high contrast, glossy skin highlights, and subtle film grain for a raw, fashion-nightlife aesthetic.

# 04

## Blueprint Technical Poster

COPY & PASTE PROMPT



Create a single-subject blueprint poster using only the main subject from the uploaded image. Render it as a clean white technical line drawing on a deep cobalt-blue blueprint background with a subtle grid. Use flat 2D schematic linework, orthographic contours, construction lines, measurement ticks, arrows, and minimal technical labels. The composition may also include 2-3 smaller inset studies or alternate views. Keep the layout simple and balanced with no shading, no 3D, no lighting, no extra objects.

# 05

## Comic Strip

COPY & PASTE PROMPT



Create a comic strip using the subject from the uploaded image. Style the comic strip in a bold Sunday funnies style with thick outlines, halftone textures, and bright 1980s colors. Pick one clear, exaggerated visual element from the photo and build the story around it, leading to a funny or unexpected payoff. Keep the dialogue short, natural, and easy to read, and make sure the joke lands clearly at a glance with no randomness or confusion.

# 06

## Minimalist Logo Grid

COPY & PASTE PROMPT

Transform this image into a grid of minimalist logos using the main subject as the core icon. Abstract and simplify the primary element into multiple unique vector-style logo marks. Each variation should reinterpret the same subject in different ways (geometric, line art, negative space, emblem, badge, monogram). Arrange 16-20 logos evenly on a light background. Keep designs clean, modern, with balanced spacing. Maintain consistency while exploring creative variations of the original subject as a cohesive branding logo collection.



## 07

## Vintage Botanical Illustration

COPY &amp; PASTE PROMPT

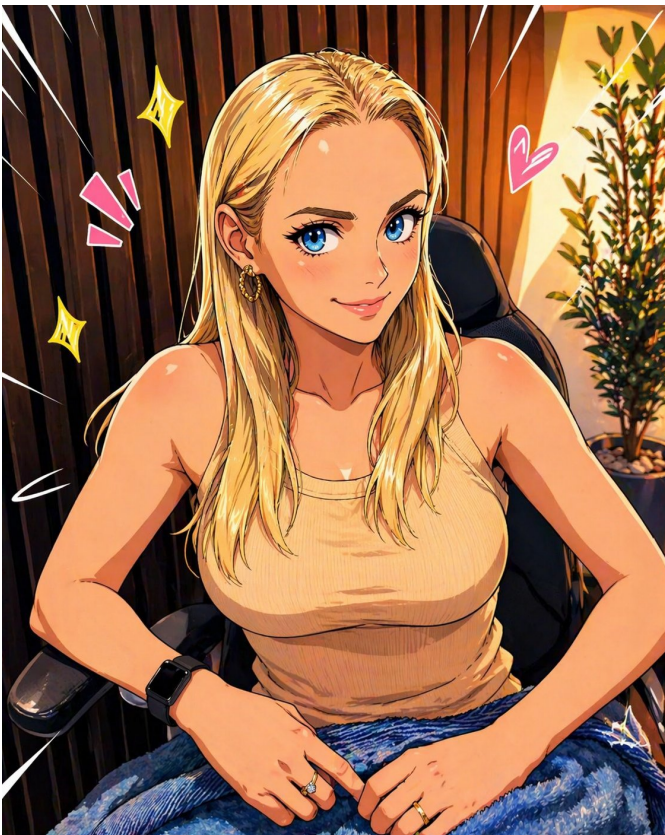


Create a vintage botanical illustration poster that reinterprets the main subject as if it were studied in a 19th-century scientific atlas, using only visible details. Use fine ink linework, delicate cross-hatching, and a realistic yet idealized illustration style. Style illustration with bright colors from the uploaded image on a white background. Lay out a central primary illustration supported by smaller inset studies, guide lines, and diagram callouts that analyze form and structure with annotated text. Include understated labels and markers. Annotated text should be in plain English and easy to read.

# 08

## Anime Art Style

COPY & PASTE PROMPT



Create a trending anime art style image from the uploaded subject. Use confident line-work with slight variation and minimal cel shading using flat shadow shapes. Use bright, saturated colors and clean graphic lighting. The style is defined by exaggerated, cartoonish character proportions featuring highly expressive, simplistic facial features that allow for immense emotional range, with highly varied stretched anatomy. Transform the environment into a slightly warped space with playful perspective distortion and simplified objects. Composition and tone should be energetic, lively, and comedic in a fully stylized, non-realistic world.

# 09

## Cinematic Film Stills

COPY & PASTE PROMPT



Transform the uploaded image into cinematic 3-frame sequential film stills (horizontal frames stacked vertically), full bleed edge-to-edge. Each frame should show a different moment from the same scene, with clear progression. Vary the composition, camera angle, and distances to create a sense of movement and storytelling. Use a cinematic, cooler-toned, high-contrast, deep-space blacks film with a natural color grade. Add subtle film grain, slight motion blur, and natural imperfections to emulate analog photography. Keep the composition candid and emotionally grounded, with a sense of movement and quiet storytelling. Overall aesthetic: cinematic, nostalgic, and organic, like raw film stills.

# 10

## Vintage Newspaper Front Page

COPY & PASTE PROMPT



Transform the person in the uploaded photo into a whimsical black-and-white vintage newspaper front page. Place them as the main portrait in the center, styled like an old engraved photograph. Surround them with bold, exaggerated headline text, narrow newspaper columns, and playful subheadings. Use high-contrast black ink on pure white background, subtle paper texture, and classic serif fonts. Add quirky, magical or humorous headlines to create a charming, slightly surreal tone. Keep the layout dense, editorial, and reminiscent of an old fantasy newspaper. Ensure the subject's face remains recognizable but stylized to match the printed newspaper aesthetic.

# 11

## Wide-Angle Spring Editorial

---

COPY & PASTE PROMPT



Transform my photo into an ultra wide-angle, ground-level portrait looking up, with only me as the subject and all original background removed. Frame the scene with oversized spring flowers inches from the lens, overlapping the edges and rising toward me to create depth. Place me above the camera, lightly interacting with the foreground in bright daylight with vivid color and strong shadows. Restyle my outfit into fashionable, modern spring clothing. Preserve my likeness and create a bold, immersive editorial feel.